



U Bein Bridge (© Gret)



Amarapura Project

Improving water and sanitation services in Mandalay City

Turning Mandalay into a green city

With a population of about 1.2 millions inhabitants, Mandalay is the second biggest city of Myanmar. Its strategic location in the centre of the country at the junction of major transport and trade axes makes it an important economic growth centre from national and international standpoints.

The city therefore grows at a fast pace and the Mandalay City Development Committee (MCDC), which assumes full responsibility of financing, planning and implementation of urban services, has to cope with an increasing population and sprawling urban areas.

Determined to develop Mandalay as a green, sustainable and economically prosperous city that benefits all its residents, the MCDC prepared a Strategic Development Plan in 2014. This plan is now starting to be carried out, notably through the implementation of the Mandalay Urban Services Improvement Project (MUSIP) which gives particular focus on improved environmental performance, equity in service provision and improved finances.

Amarapura Township as a pilot

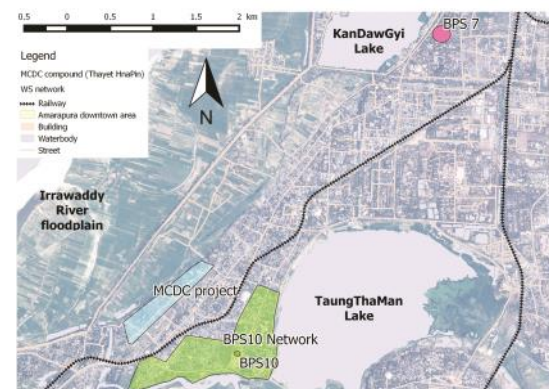
Located in the South of the City, Amarapura is the largest Township of Mandalay City. Most of it is rural except its north-western part, composed of 9 urban wards encompassing many religious buildings and touristic places such as the famous U Bein Bridge. Its location and its recent incorporation within the service area of the MCDC, in 2011, make it one of the most under-served area of Mandalay City and the MCDC therefore selected it to test improvement measures to enhance the quality of the water service.



Mandalay City and the project zone (© Nodalis)

Facts and figures of Amarapura Township

- A population of about 250,000 inhabitants among which only 25% live in urban area
- A surface of 207.5 km² representing more than 65% of the total surface of the City
- Even in urban areas, most of inhabitants rely on individual and unimproved sources of water (mostly unprotected wells and boreholes without treatment)
- Only 5 out of the 9 urban wards are partially covered by collective water facilities
- About 12 kilometers of distribution networks are laid but there are only 76 individual connections (November 2016)



Water distribution zones in Amarapura Township (© Suez)

Expanding access to the water service...

The Project aims at providing a new access to the water service for at least 2,000 households of Amarapura Township. Beyond the implementation of new water facilities, the main challenge to reach this goal will lie in the relevance of the measures taken to foster the connection of households to the networks. Most of them currently use individual shallow tube wells or public unprotected wells and are not aware of health risks they are exposed to. The lack of information about modalities to access the service and the lack of trust toward the MCDC also explain their reluctance to connect to the networks.

In this context, Gret will define and test appropriate measures aiming to increase the number of connections to the networks. Specific mechanisms to facilitate the access to the service for the poorest and adapted modalities for the connection of public and religious building will also be experimented. Finally, Gret will support the MCDC to improve the service quality as it is a key condition to regain the confidence of the population and to sustain the investments.



Construction of a water production facility in Amarapura Township

... And paving the way for larger projects

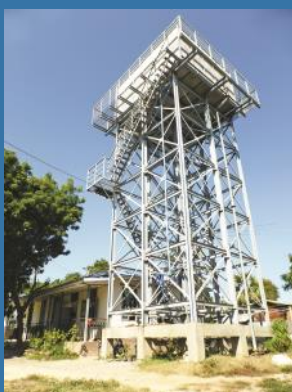
Another major objective of Amarapura project is to pave the way for the implementation of the Water component of MUSIP. The installation of measuring equipments will thus allow acquiring data on the functioning of the system to support the sizing of future facilities.

Designed as a pilot project, Amarapura Project also aims at testing working methods and collaboration modalities between a consultant team and the MCDC, at experimenting technical and managerial improvement measures at small scale and at supporting the MCDC to better plan, coordinate and supervise all projects undertaken by the various sector actors working in Mandalay.

The project's components

- **Part 1 - Works:** provision of an access to the water service for at least 2,000 households in Amarapura Township.
- **Part 2 - Pilot zone for water and sanitation management:** enhancement of MCDC capacities to manage the water and sanitation services.
- **Part 3 - Procurement and management of monitoring equipments:** establishment of a baseline data through the installation of monitoring equipments.
- **Part 4 - Preparation of tender documents:** initiation of the procurement process for 3 contracts to be implemented under the Water component of MUSIP project.

Current conditions of the water supply in Amarapura Township



Elevated tank on a production site



A public unprotected well



A private tubewell



An individual connection

Photos on page 2: © Gret

BUDGET OF 2 500 000 EUROS
FINANCED BY :

Agence Française de Développement



CONTACT :

Thibaut LE LOC'H, Project Manager
tel : +95 (0)9 452 102 989 / e-mail : le-loch@gret.org

www.gret.org

Present in Myanmar for more than 20 years, GRET is an international NGO that has been actively fighting poverty and inequalities for 40 years, providing lasting and innovative solutions for fair development in the field and working to positively influence policy.

Myanmar

GRET